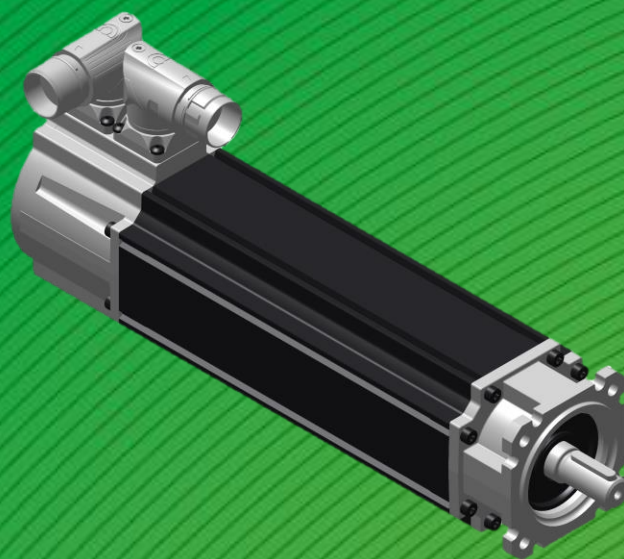


**CONTROL TECHNIQUES
DYNAMICS**



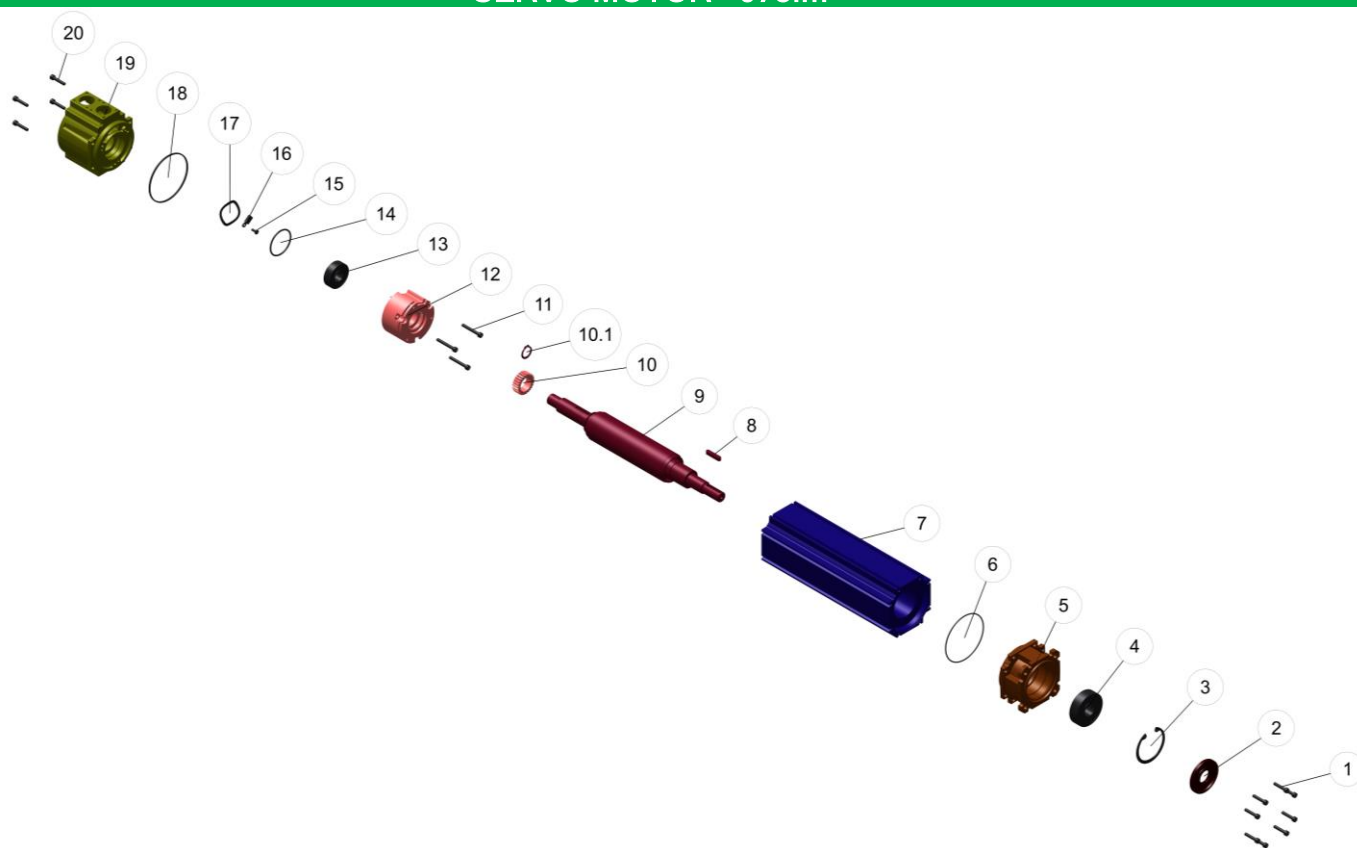
ARCoE – Aftersales Sheet

075fm



SERVO MOTOR - 075fm

1



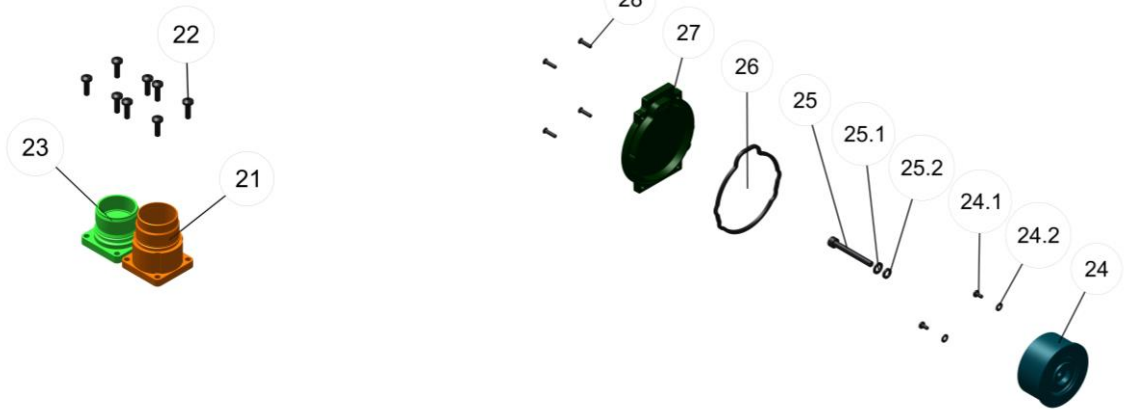
Components

*see kit list

Tag	Torque	Item	Description	Qty	Tool
1	2.7 Nm	1000000724	6166725 > SCREW M4 x 20 CAP TORX TT SELF COLOURED (BLACK)	8	T20
2		1000027143	6620728 > LIPSEAL 20X47X5 VITON+SPRING		
2		1000318381	6620949 > LIPSEAL 17X47X5 VITON+SPRING	1	
3		1000026303	6541925 > CIRCLIP BEVELLED N1302 0185	1	
4		40009914	BEARING 47X20X14 SINGLE ROW DEEP GROOVE CAPPED BALL-BEARING 6204ZZ-M.SH-C3-LUG23		
4		1000317042	6525318 > BEARING 47X17X14 6303ZZ-TOLE-C3-LUG23	1	
5		1000307913	IM/0181/MC > END FRAME FRONT EXT 75	3	
6		1000027225	6623805 > O RING 66X1.5	1	
7		075U3-----/HSA*	075 HOUSING ...	1	
8		1000001873	IM/0045/MC/03 > KEY OUTPUT 6X6X32	1	
9		075U3----075140/RA*	... ROTOR 075...	1	
10		1000006404	IM/0363/MI/08 > BRAKE HUB 075 U3 TYPE 6 BRAKE 1-23-2604-B152	1	
10		1000310350	IM/0135/MI/09 > BRAKE HUB 75 UM/U2 TYPE 5	1	
10.1		1000026328	6542654 > CLIP E ANDERTON M1800-0150A	1	
10.1		1000006355	CIRCLIP EXTERNAL DIAM. 15	1	
11	2.5 Nm	1000308522	6110029 > SCREW M4X30 PAN TORX TT	3	T20
12		1000005079	6462111 > BRAKE 2NM 52.0 PCD TD6465 2-56-0601 067 HD / 075 U3 S&G TYPE 6 BRAKE		
12		1000311986	6461255 > BRAKE 2.2Nm FAILSAFE		
12		1000318756	6461697 > BRAKE 4Nm FAILSAFE		
13		4373111	SINGLE ROW DEEP GROOVE CAPPED BALL-BEARING "ZZ" TYPE: 6202 - CAGE:M.SHEET - CL.: C3 - GREASE:LUG23	1	
14		1000313324	6623832 > O RING 34X2 NITRYLE 70 SHORE	1	
15	1 Nm	1000024035	6161529 > SCREW M3X8 PAN TORX TT	1	T10
15		1000026472	6553567 > WASHER M3 HELICAL SPRING LOCK	1	
16		1000311812	IM/0055/EL/01 > LEAD EARTH TAG ASSY 150MM COMPLETE	1	
17		1000317357	6555217 > WASHER PRELOAD EMO-X28 = 137N	1	
18		1000027225	6623805 > O RING 66X1.5	1	
19		1000001881	IM/0601/MC/01 > REF 75 U3 ENCODER	1	
20	2.7 Nm	1000000724	6166725 > SCREW M4 x 20 CAP TORX TT SELF COLOURED (BLACK)	4	T20

SERVO MOTOR - 075fm

2

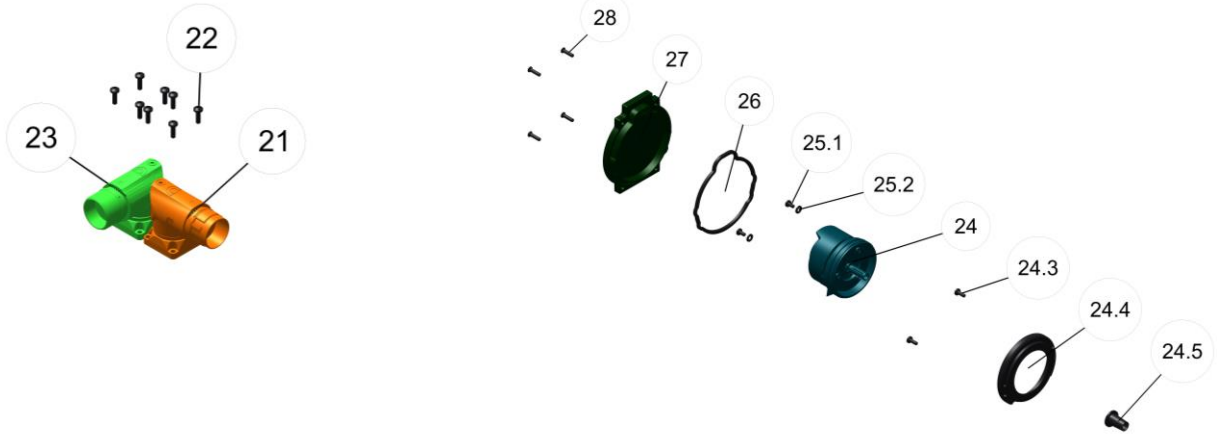


Components - Resolver Feedback AE

Tag	Torque	Item	Description	Qty	Tool
21		1000318063	7584040 > CONNECTOR HOUSING PWR STRAIGHT	1	
22	1.2 Nm	1000024035	6161529 > SCREW M3X8 PAN TORX TT	8	T10
23		1000318067	7584067 > CONNECTOR HOUSING SIG VERT	1	
24		1000317451	IM/0083/EL > RESOLVER HD & U3 CBORE + RECESS	1	
24.1	1.2 Nm	1000024036	6161537 > SCREW M3X6 PAN TORX TT	2	T10
24.2		1000005230	6162924 > WASHER FLAT M3 TYPE M BZP	2	
25	5 Nm	1000318868	6167500 > SCREW M5X40 SOCKET CAP CARBON STEEL GRADE 12.9 BZP	1	TD183
25.1		1000026491	6554148 > WASHER PLAIN M5 FORM C 12.5x5.3x1.0 BZP	1	
25.2		1000026493	6554164 > WASHER SPR SQ SECT S/COIL M5	1	
26		1000308017	IM/0113/MI > GASKET 75 REAR COVER	1	
27		1000308300	IM/0035/CA > REAR COVER 75 U2/U3	1	
28	1.5 Nm	1000308036	6161049 > SCREW M3X12 CSK TORX TT	4	T10

SERVO MOTOR - 075fm

3

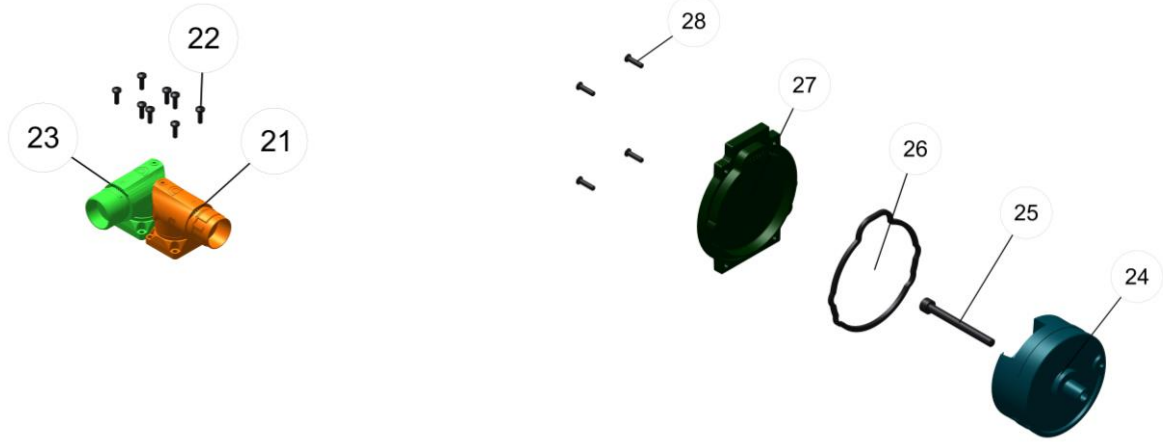


Components - Incremental Encoder Feedback CA - resolver mount

Tag	Torque	Item	Description	Qty	Tool
21		1000318062	7584032 > CONNECTOR HOUSING PWR RA ROT	1	
22	1.2 Nm	1000307714	6161677 > SCREW M3X10 PAN TORX TT	8	T10
23		1000318066	7584059 > CONNECTOR HOUSING SIG RA ROT	1	
		1000001146	8901562 > ENCODER CFS50 INCREMENTAL 4096PPR 3PP	1	
24		1000004349	8901694 > ENCODER SICK CFS50 4096 3PP RESOLVER MOUNT PLUG IN SHAFT	1	
24.3	1.2 Nm	1000024035	6161529 > SCREW M3X8 PAN TORX TT	2	T10
24.4		1000004337	IM/0640/MC > ADAPTER ENCODER MOUNT RES SICK CFS50 HD/U3	1	
		1000317936	IM/0229/MI > ADAPTER ENCODER CFS50 MOUNT	1	
24.5		1000001041	IM/0323/MI > SHAFT INSERT TAPERED PPS RESIN	1	
		1000317937	IM/0460/MC > STUB SHAFT CFS50 TAPER ADAPTER	1	
25.1	1.2 Nm	1000024036	6161537 > SCREW M3X6 PAN TORX TT	2	T10
25.2		1000005230	6162924 > WASHER FLAT M3 TYPE M BZP	2	
26		1000308017	IM/0113/MI > GASKET 75 REAR COVER	1	
27		1000308300	IM/0035/CA > REAR COVER 75 U2/U3	1	
28	1.5 Nm	1000308036	6161049 > SCREW M3X12 CSK TORX TT	4	T10

4

SERVO MOTOR - 075fm

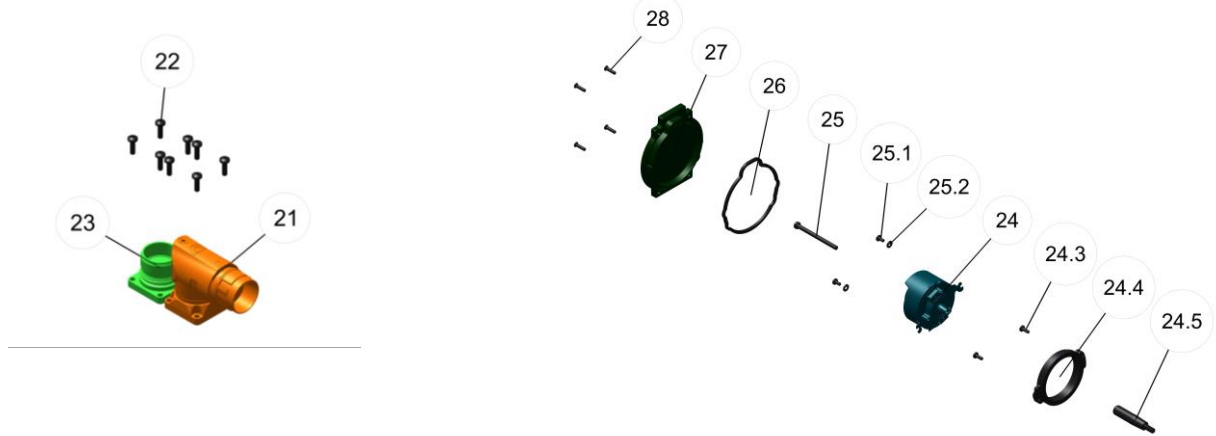


Components - Inductive EndDat SinCos Multi-turn Feedback EC

Tag	Torque	Item	Description	Qty	Tool
21		1000318062	7584032 > CONNECTOR HOUSING PWR RA ROT	1	
22	1.2	1000307714	6161677 > SCREW M3X10 PAN TORX TT	8	T10
23		1000318066	7584059 > CONNECTOR HOUSING SIG RA ROT	1	
24		1000000835	8901511 > ENCODER EQI 1331 GEN 2.5 MULTI TAPER WITH INCREMENTAL CHANNELS	1	
24			Cam	1	
24			Cover	1	
25	5 Nm 0.3 Nm/2 Nm 0.4 Nm	1000320998	6167489 > SCREW M5x50 CAP HEX HD Ex11300	1	TD239 TD 146 / TD099 TD 242
26		1000308017	IM/0113/MI > GASKET 75 REAR COVER	1	
27		1000308300	IM/0035/CA > REAR COVER 75 U2/U3	1	
28	1.5 Nm	1000308036	6161049 > SCREW M3X12 CSK TORX TT	1	T10

5

SERVO MOTOR - 075fm



Components - Optical Hiperface SinCos Multi-turn Feedback RA - taper

Tag	Torque	Item	Description	Qty	Tool
21		1000318062	7584032 > CONNECTOR HOUSING PWR RA ROT	1	
22	1.2 Nm	1000024035	6161529 > SCREW M3X8 PAN TORX TT	4	T10
	1.2 Nm	1000307714	6161677 > SCREW M3X10 PAN TORX TT	4	T10
23		1000318067	7584067 > CONNECTOR HOUSING SIG VERT	1	
24		1000319341	8901309 > ENCODER SRM50 TAPER SPR MOUNT	1	
24.3	1.2 Nm	1000024035	6161529 > SCREW M3X8 PAN TORX TT	2	T10
24.4		1000317936	IM/0229/MI > ADAPTER ENCODER CFSS0 MOUNT	1	
24.5	5 Nm	1000317937	IM/0460/MC > STUB SHAFT CFS50 TAPER ADAPTER	1	TD235
25	3.1 Nm		SINCOS screw with encoder	1	TD064
25.1	1.2 Nm	1000317945	6110223 > SCREW M3X6 PAN TORX PLAS-FIX	2	T10
25.2		1000005230	6162924 > WASHER FLAT M3 TYPE M BZP	2	
26		1000308017	IM/0113/MI > GASKET 75 REAR COVER	1	
27		1000308300	IM/0035/CA > REAR COVER 75 U2/U3	1	
28	1.5 Nm	1000308036	6161049 > SCREW M3X12 CSK TORX TT	4	T10

Parts not on the exploded view

Item	Description	Comment
1000021969	5313031 > BAG POLY" 6" x 3" 500G	BAG POLY" 6" x 3" 500G
1000311800	7582951 > BANDOLIER PINS	BANDOLIER PINS
1000022002	5317134 > BOX CARTON 495L x 150W x 180H 12 KILO 0201	BOX CARTON 495L x 150W x 180H
1000033282	7585284 > CAP CONNECTOR SIZE 1 BLACK	CAP CONNECTOR SIZE 1 BLACK
1000022035	5320070 > CAP SHAFT 14mm	CAP SHAFT 14mm
1000022036	5320089 > CAP SHAFT 19MM	CAP SHAFT 19MM
1000311140	IM/0153/MI > CERTIFICATE TEST IND. MOTOR (QUANTITY PER BOX)	CERTIFICATE TEST IND. MOTOR (Q
1000318064	7584148 > CONTACT PIN PWR WRE 0.35-2.0MM	CONTACT PIN PWR WRE 0.35-2.0MM
1000315289	7587392 > CONTACT PIN SIGNAL	CONTACT PIN SIGNAL
1000302179	7571828 > CONTACT SOCKET SIGNAL 1mm	CONTACT SOCKET SIGNAL 1mm
1000004058	5270219 > GREASE AEROSHELL 22 (3kg)	GREASE AEROSHELL 22 (3kg)
1000311798	7582943 > INSERT CONN 12W POL 20	INSERT CONN 12W POL 20
1000311799	7582978 > INSERT CONN 17W POL 0	INSERT CONN 17W POL 0
1000314623	IM/0186/MI > LABEL ADDITIONAL INFO WHITE	LABEL ADDITIONAL INFO WHITE
1000003497	IM/0347/MI > LABEL FM MOTOR AND MULTI-SYMBOL SAFETY (U3)	LABEL FM MOTOR AND MULTI-SYMB0
1000002189	IM/0071/MI > LABEL RATING BLANK U3 & HD	LABEL RATING BLANK U3 & HD
1000305906	7519893 > LABEL READYPRINT YELLOW	LABEL READYPRINT YELLOW
1000306051	5330262 > LABEL SHAFT WARNING MULTILINGUAL	LABEL SHAFT WARNING MULTILINGU
1000309831	5589967 > LEAD ENCODER ECI1317/EQI1329	LEAD ENCODER ECI1317/EQI1329
1000319348	5589886 > LEAD ENCODER SICK SRS/M50	LEAD ENCODER SICK SRS/M50
1000317834	5589932 > LEAD FOR SICK CFS50 ENCODER	LEAD FOR SICK CFS50 ENCODER
1000317051	IM/0212/MI > MANUAL INSTALLTN UM/FM/HD/ATEX	MANUAL INSTALLTN UM/FM/HD/ATEX
1000032820	7517866 > SLEEVE INS' H/S KYNAR 1.6MM	SLEEVE INS' H/S KYNAR 1.6MM
1000315683	IM/0021/EL/19 > SLEEVING VIDAFLEX 4x180mm	SLEEVING VIDAFLEX 4x180mm
1000315025	IM/0021/EL/13 > SLEEVING VIDAFLEX 4x65mm	SLEEVING VIDAFLEX 4x65mm
1000322548	IM/0021/EL/24 > SLEEVING VIDAFLEX 7x85mm	SLEEVING VIDAFLEX 7x85mm
1000317395	5259363 > SOLDER LEAD FREE 0.7MM	SOLDER LEAD FREE 0.7MM
1000006369	7520166 > TERMINAL CRIMP RING TAG M3 22-18 AWG UNINSULATED	TERMINAL CRIMP RING TAG M3 22-
1000311813	5551021 > WIRE GREEN/YELLOW 18AWG UL1330 FEP	WIRE GREEN/YELLOW 18AWG UL1330

Repair kits

075-142U35B/PCON, 075-142U3V/PCON, 075-190U3D/SCON, 075-190U3V/SCON
075U3/GA, 075U3075/FEF, 075U3/REF, 075U35/BK, 075U36/BK

075U3B300K/HSA, 075U3B300P/HSA, 075U3B306K/HSA, 075U3B306P/HSA
075U3B300K/HSA, 075U3B300P/HSA, 075U3B306K/HSA, 075U3B306P/HSA
075U3D300K/HSA, 075U3D300P/HSA, 075U3D306K/HSA, 075U3D306P/HSA
075U3D300K/HSA, 075U3D300P/HSA, 075U3D306K/HSA, 075U3D306P/HSA

075-190U3AE/FB, 075-190U3EC/FB, 075-190U3FC/FB, 075-095U3CA/FB, 075-095U3RA/FB
075U3BEC/SCON, 075U3VCA/SCON, 075-095U3BRA/SCON

Connectors components

	Assembly	Shell PN	Screw PN	Black Insert PN	White Insert PN	Brown Insert PN
Power	1000318062	1000000952	1000320816 (1)	1000000939	1000000946	X
	1000318063	1000000953	X	1000000940	1000000947	X
	1000000848	1000000954	1000320816 (1)	1000000939	1000000946	X
	1000000849	1000000955	1000320816 (1)	1000000939	1000000946	X
	1000000850	1000000956	X	1000000940	1000000947	X
	1000320277	1000000957	1000320816 (1)	1000000942	1000000948	X
	1000320182	1000000958	1000320816 (1)	1000000943	1000000949	X
	1000000851	1000000959	1000320816 (1)	1000000942	1000000948	X
	1000000852	1000000960	X	1000000943	1000000949	X
	1000000853	1000000961	1000000938 (X3)	1000000944	1000000950	X
	1000315751	1000000962	X	1000000944	1000000950	X
	1000000854	1000000963	X	1000000944	1000000950	X
Signal	1000318066	1000000964	1000320816 (1)	X	X	1000000945
	1000318067	1000000965	X	X	X	X
	1000000855	1000000966	1000320816 (1)	X	X	1000000945
	1000000856	1000000967	X	X	X	X

Connect with us at:

ctdsales@mail.nidec.com

www.controltechniquesdynamics.com



**CONTROL
TECHNIQUES
DYNAMICS**

© Control Techniques Dynamics Ltd. The information contained in this document is for guidance only and does not form part of any contract. The accuracy cannot be guaranteed as our company have an ongoing process of development and reserve the right to change the specification of their products without notice.

Nidec Control Techniques Limited. Registered Office: The Gro, Newtown, Powys SY16 3BE. Registered in England and Wales. Company Reg. No. 01236886.