

N° :

Date : 13 janv. 2020

SERVO MOTOR 250U3D250HAEBC300480



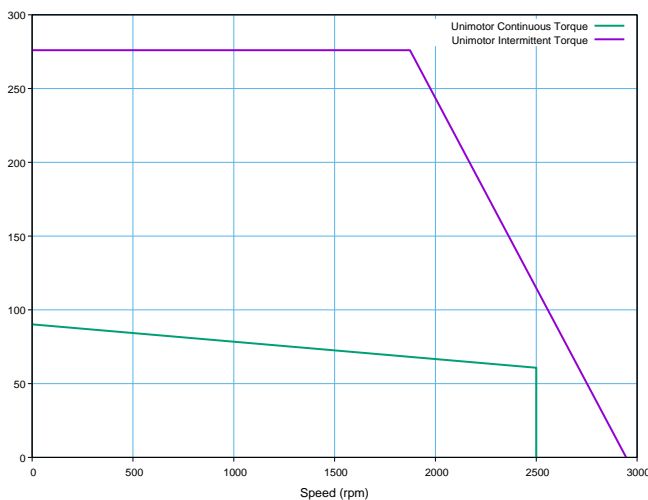
Definition

Type	Unimotor FM	
Frame Size (mm)	250	
Voltage	U	U - 400V
Magnet type	3	3 - Standard
Frame Length	D	
Speed (min-1)	25	2500
Brake	0	Unbraked (0)
Connection type	H	H - Power hybrid box and Signal 90°
Output shaft	A	with key
Feedback device code	EB	EB - Optical EnDat SinCos MultiTurn (EQN 1325)
Inertia & thermistor	C	C - Standard inertia + KTY84-130 thermistor
PCD	300	300 (FF 300 / 250)
Shaft Diameter	480	48k6 x 110.0 .
Fan box	-	
Insulation class	F	
UL Motor / UL Stator	- / -	

Nominal characteristics

Motor Ambient Temperature (°C)	40	Drive Fsw (kHz)	12
Motor Stall Torque (N.m)	92.00	Stall Current (A)	43.00
Rated Torque (N.m)	62.00	Rated Current (A)	29.5
Motor Peak Torque (N.m)	276.00		
Rated Power (kW)	16.23	Kt (Nm/A)	2.10
Winding Thermal Time Constant (s)	439	Ke (V/kmin-1)	129.00
Number of Poles	8	R (ph-ph) (Ohm)	0.09
Maximum Cogging (N.m)	-	L (ph-ph) (mH)	3.50
Inertia (kg.cm ²)	275.00	Product mass	57.73
Ingress Protection Level (IP)	IP65		

Torque / speed graph



Configured characteristics

Motor Ambient Temperature (°C)	40
Drive Fsw (kHz)	8
Derating Factor	0.98
Stall Torque with Derating Factor (N.m)	90.16
Nominal Torque after Derating (N.m)	60.76
Peak Torque with Derating Factor (N.m)	276.00

Version V1.373

The information contained in this data-sheet is for guidance only and does not form part of any contract. The accuracy cannot be guaranteed as our company have an ongoing process of development and reserve the right to change the specification of their products without notice.

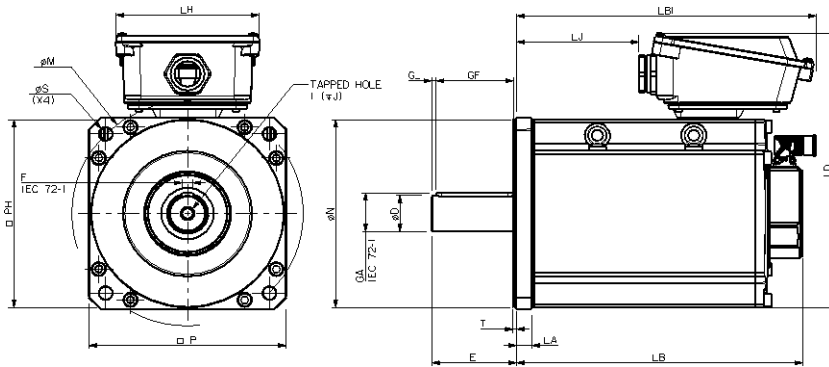
Control Techniques Dynamics Limited. Registered Office: South Way, Andover, Hampshire, SP10 5AB, UK. Registered in England and Wales. Company Reg. No 741360
 Moteurs Leroy-Somer SAS. Siège social : Bd Marcellin Leroy, CS 10015, 16915 Angoulême Cedex 9, France. Capital social : 65 800 512 €, RCS Angoulême 338 567 258.
 Control Techniques Limited. Registered Office: The Gro, Newtown, Powys SY16 3BE. Registered in England and Wales. Company Reg. No. 01236886.

N° :

Date : 13 janv. 2020

SERVO MOTOR 250U3D250HAEBC300480 - Unimotor FM 250U3D250HAEBC300480

Motor (° & mm)



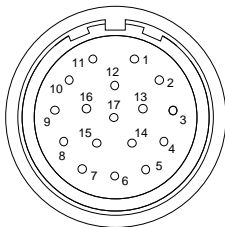
LB	Total length	370.70
LB1		
LC	Power connector position	273.70
LJ		
LA	Flange thickness	20.0
T	Register Length	4.5
N	Register Diameter	250.0
LD	Power connector overall height	363.50
LD1		
P	Flange Square	256.0
S	Fixing Hole Diameter	18.5
M	Fixing hole PCD	300
PH	Motor Housing Width	250
D	Shaft Diameter	48k6
E	Shaft Length	110.0
GA	Key Height	51.5
GF	Key Length	100.0
G	Key to Shaft End	6.0
F	Key Width	14
I	Tapped Hole Thread Size	M16x2
J	Tapped Hole Depth	37.0
	Mounting Bolt	M16

Motor electrical interface

Feedback device code : EB - Optical EnDat SinCos MultiTurn (EQN 1325)
= '03' Cable : SI

Connection type :
Conductors size :

H - Power hybrid box and Signal 90°
4G16 (F)



- 1 - CTP
- 2 - CTP
- 3 - Screen
- 4 - -
- 5 - -
- 6 - -
- 7 - -
- 8 - CLK

Screen

